

FACTORY

**THE PIPE
FACTORY**

PRODUCTION / LOCATION / HIRE INFORMATION

THE PIPE

FACTORY

THE PIPE





OUR LOCATION IS AT THE HEART OF BOTH CALTON AND THE BARRAS MARKET. BOTH OF DISTINCT CHARACTER EMBEDDED IN THE GLASGOW PSYCHE.

MISSION STATEMENT & CORE OBJECTIVES

The Pipe Factory was established in July 2011 as an artist's run, not-for-profit, independent, space for art which, dedicated to the production and dissemination of artist work and ideas.

We provided unique spaces for artists to work, opportunities to experiment and exhibit in a supportive community environment and ran a public programme that included residencies, exhibitions, events and publications.

In 2021 The Pipe Factory was purchased by Friends of The Pipe Factory CIC (SC662451), as a community asset and creative hub with young people and their communities at its heart, in a building which fuels the creativity that will generate pathways to pursue individual learning, development in the fields of the arts, architecture and design.

OUR AIM IS TO SUPPORT:

- stimulus for partnering with other local organisations to develop enterprise initiatives
- social businesses that will enhance the city economy
- well-being opportunities for individuals working in heritage and the creative industries
- inspiration for artists and local, regional, and national arts organisations
- resources that support young people's creative and cultural development and aspirations
- pathways to employability through a skills, training, and modern apprenticeship programme
- inclusive places that connect people through the arts and heritage
- centrally located creative learning activities, festivals, events, residencies, and installations

**THE ITALIAN RENAISSANCE
INSPIRED DESIGN DETAILS ARE
SOME OF THE MOST INTRICATE
AND ORNATE USE OF BRICK TO
BE FOUND WITHIN THE CITY.**



**BY 1890 THE FORMER FACTORY
WAS PRODUCING UP TO
14,000 PIPES PER DAY.**

Built 1876-79, and designed by architect Matthew Forsyth (1850-80).

By 1890 the former factory was producing up to 14,000 pipes per day. White and other smaller manufacturers in Glasgow supplied clay pipes to the world - according to John Hume they are commonly excavated in North American pioneer settlements and can be used for dating them.

The building comprises a complex sequence of three ornate red and white brick buildings, which were originally linked by an equally ornate two storey building filling the site between the three buildings (which was the main entrance and housed the kilns).

Openings are mostly round-headed and recessed in shallow panels with inset pilasters, pilasters also divide bays. The building consists of 4 storeys with a tall attic, each block symmetrical and with a 2-storey oriel corbelled above ground floor.

The centre gable design is of Low Countries derivation, and the glazing is mostly original. Flank elevations are also similarly ornamented, particularly the South flank to Moncur street. Inside the timber floors are on cast-iron columns.

Matthew Forsyth was born in 1850, the son of James Forsyth, farmer and his wife Elizabeth Downs. He commenced practice at the early age of twenty-three in Airdrie, but soon opened an office at 191 West George Street, Glasgow. In 1879 he was a member of the Council of Management of the Glasgow Institute of Architects.

His completed only a few buildings before his promising architectural career was cut short when he tragically died, in February 1880, at the age of 29.

GROUND FLOOR

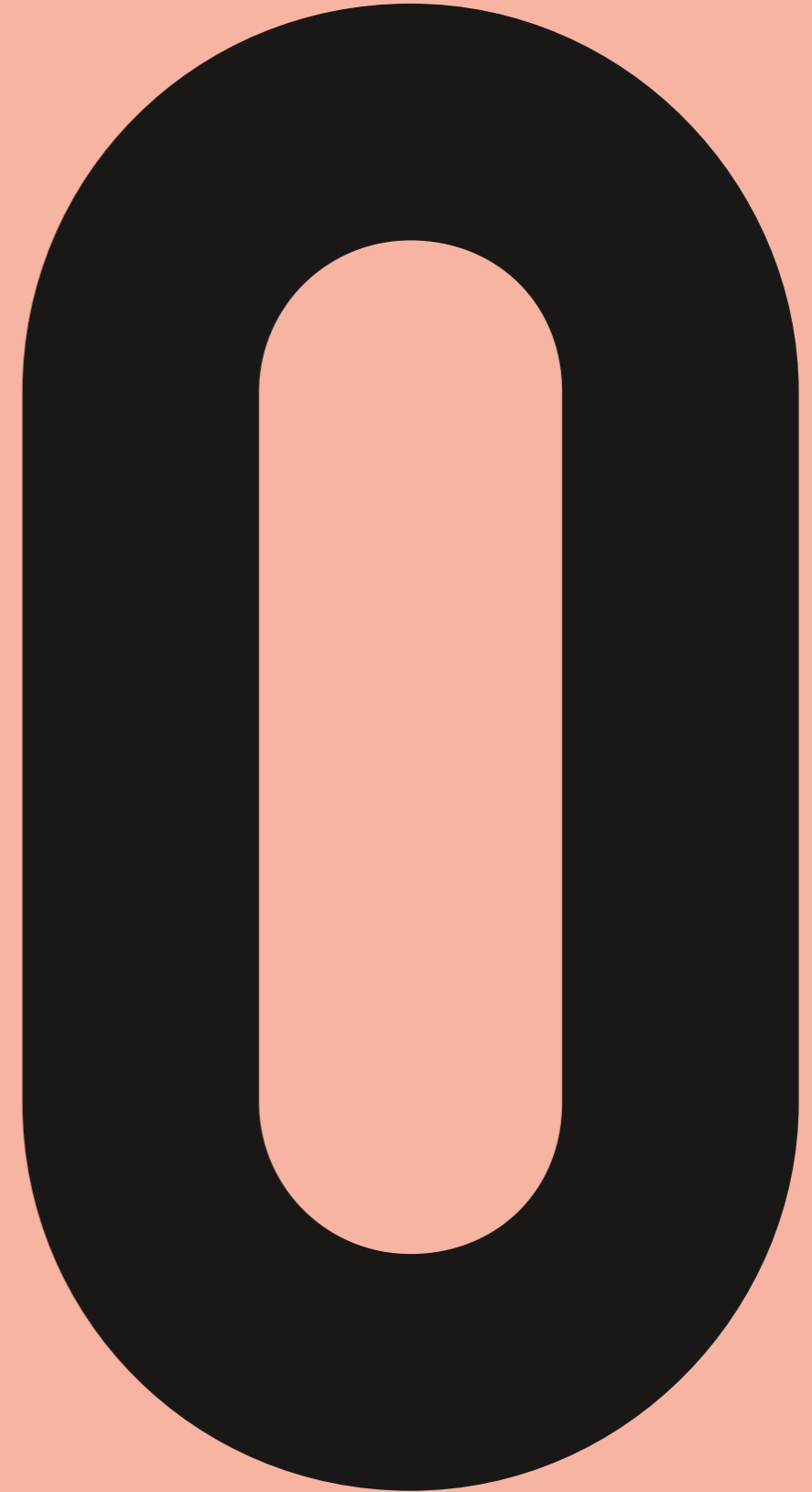
FLOOR AREA: **148 SQUARE METERS**

POWER & LIGHTING: **FLUORESCENT LIGHTING AND
13A STANDARD SOCKETS.**

ACCESSIBILITY: **FULLY ACCESSIBLE, DOUBLE
DOORS ONTO MONCUR STREET.**

HEATING: **NO**

FACILITIES: **GALLERY GRADE WALLS**





FIRST FLOOR

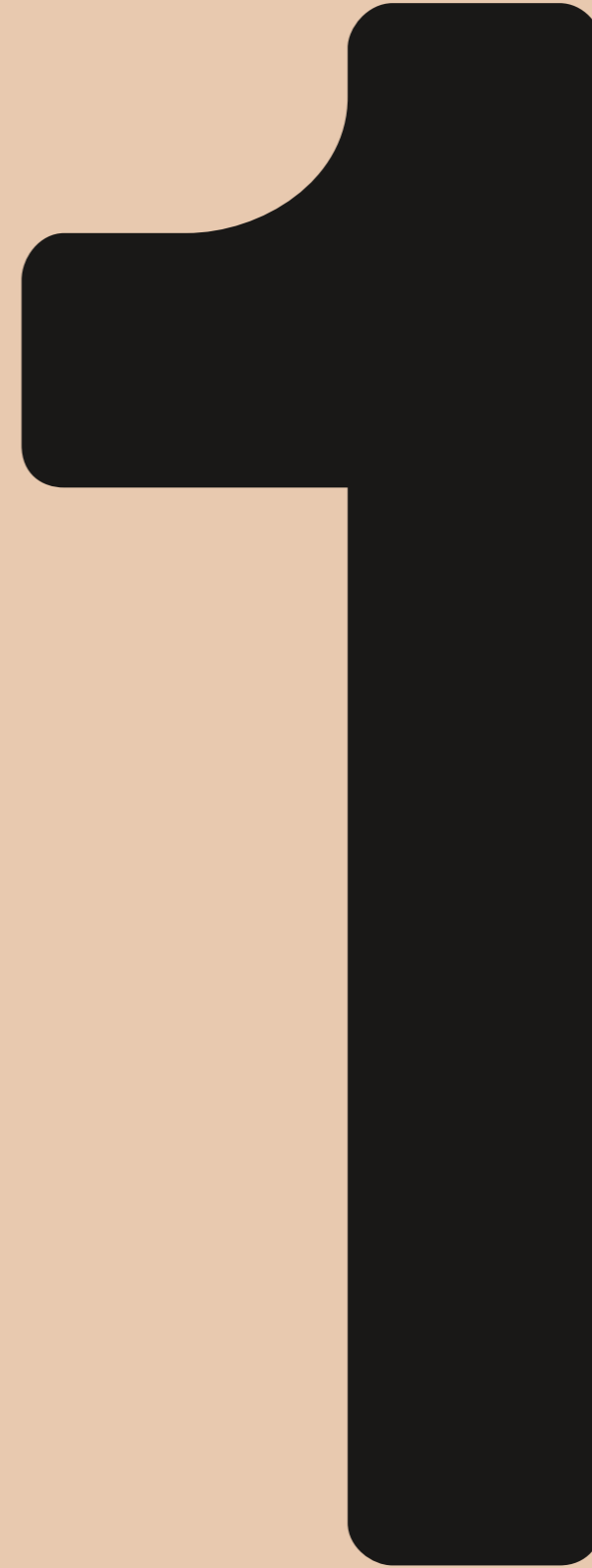
FLOOR AREA: **141 SQUARE METERS**

POWER & LIGHTING: **FLOUROSCENT LIGHTING AND
13A STANDARD SOCKETS.**

ACCESSIBILITY: **LIMITED. UP ONE FLIGHT OF STAIRS.**

HEATING: **NO**

FACILITIES: **N/A**





SECOND FLOOR

FLOOR AREA: 141 SQUARE METERS

**POWER & LIGHTING: FLOURSCENT LIGHTING
AND 13A STANDARD SOCKETS.**

**3 PHASE AVAILABLE WITHIN BUILDING. ACCESSIBILITY:
NO. ACCESS VIA TWO FLIGHTS OF STAIRS. HEATING: NO
FACILITIES: GALLERY GRADE WALL**







THIRD FLOOR

FLOOR AREA: **141 SQUARE METERS**

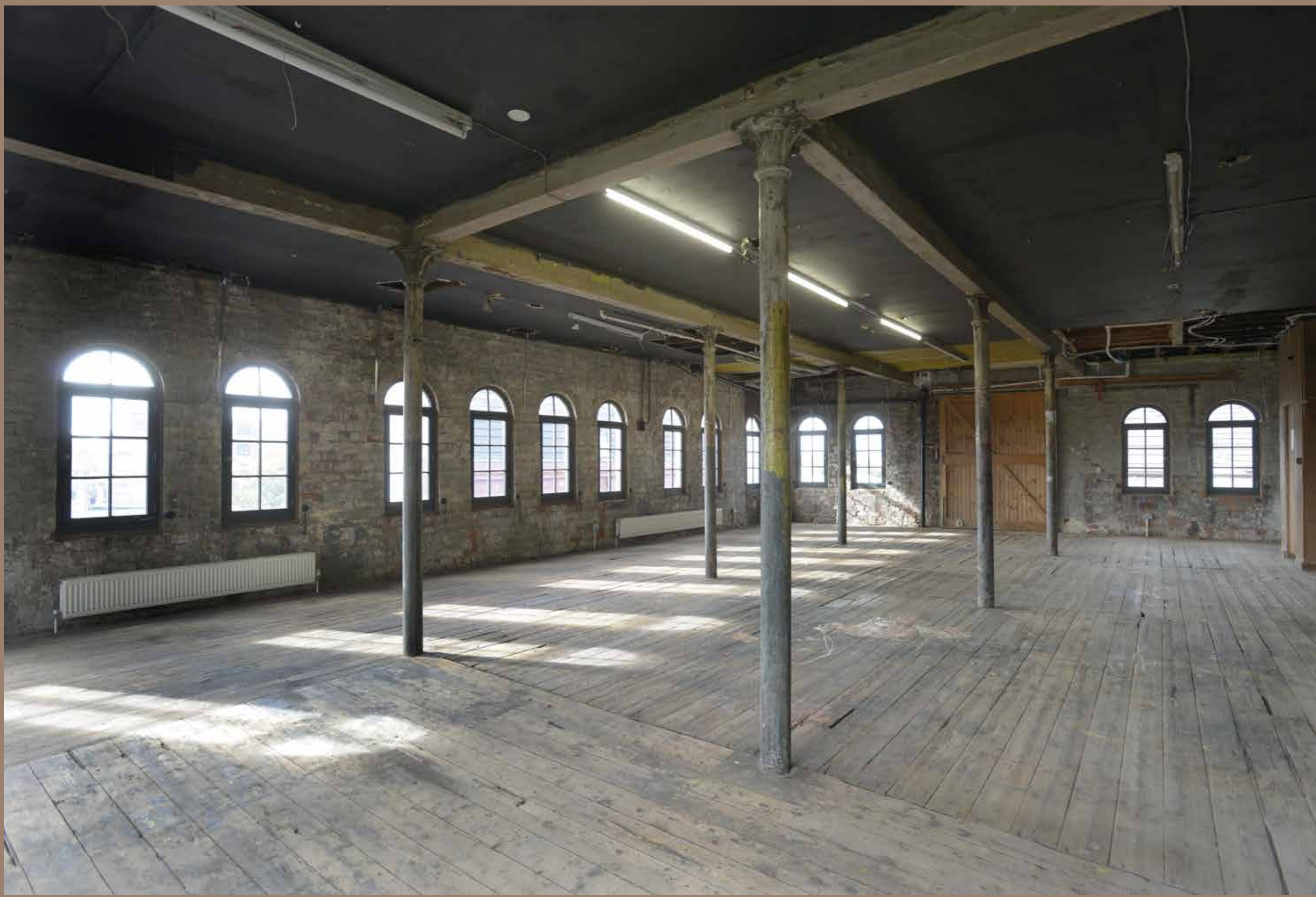
POWER & LIGHTING: **FLOURSCENT LIGHTING
AND 13A STANDARD SOCKETS.**

ACCESSIBILITY: **NO. ACCESS VIA THREE FLIGHTS OF STAIRS.**

HEATING: **NO**

FACILITIES: **N/A**







FOURTH FLOOR

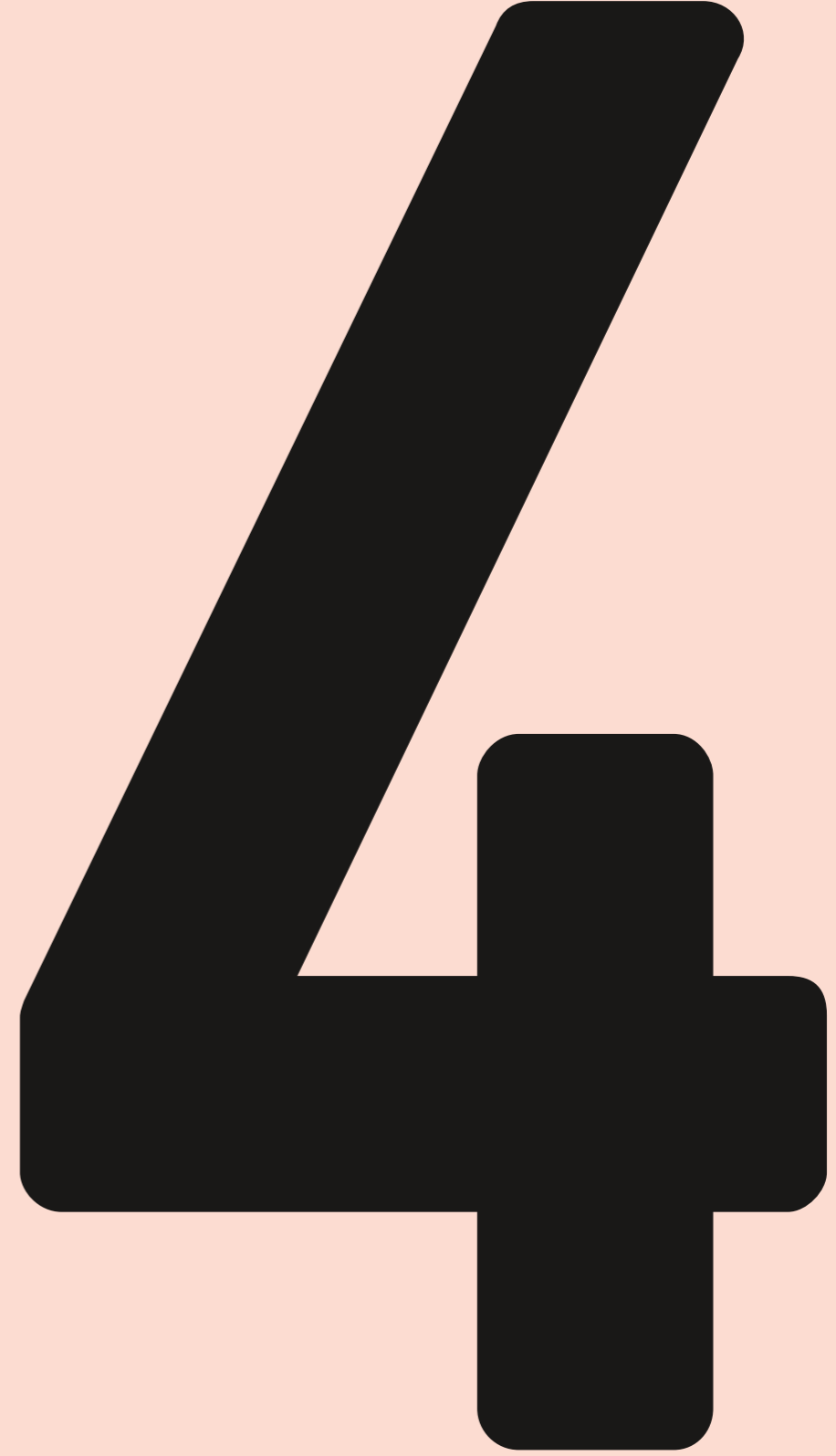
FLOOR AREA: **110 SQUARE METERS**

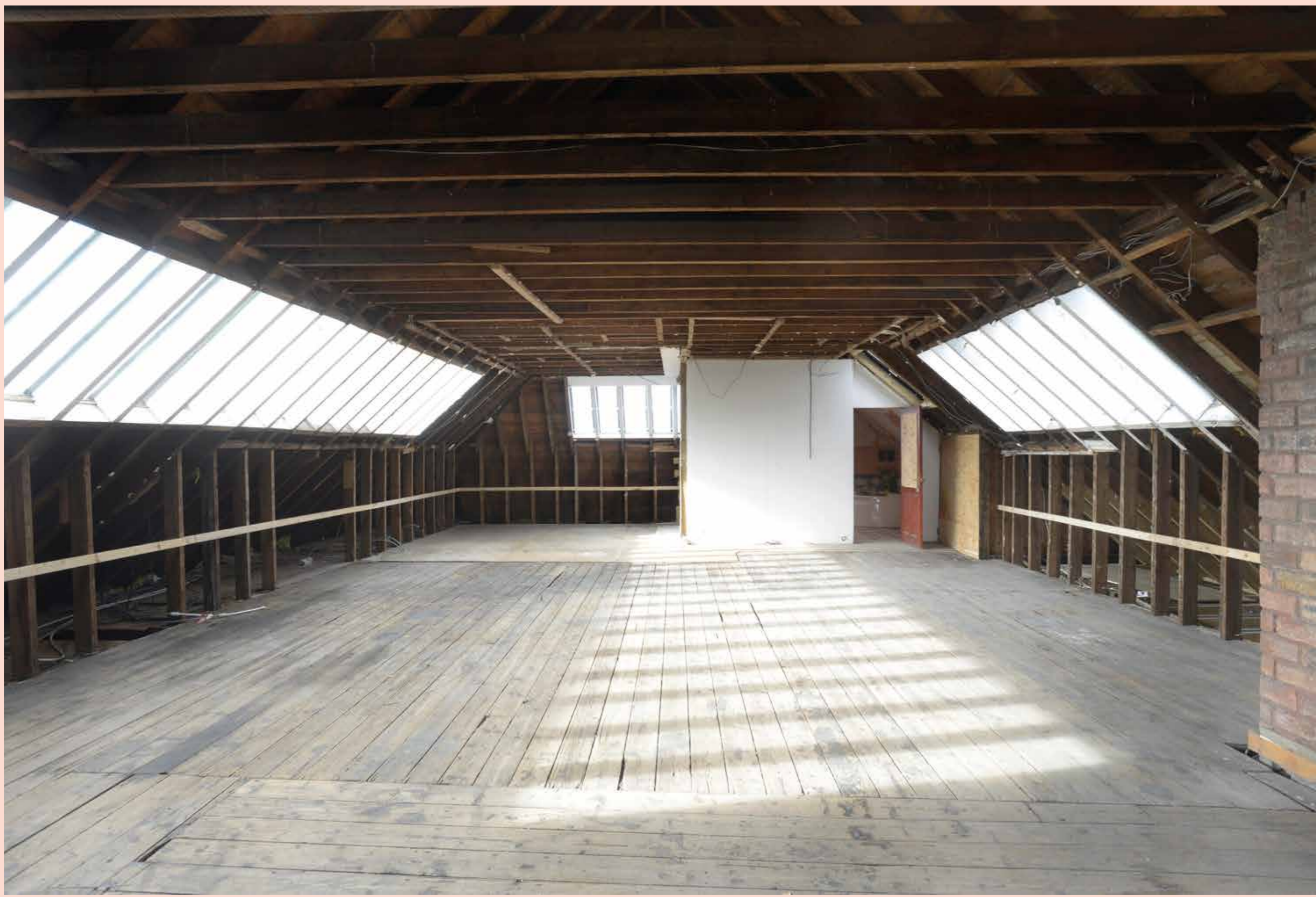
POWER & LIGHTING: **NO LIGHTING. 13A STANDARD SOCKETS.**

ACCESSIBILITY: **NO. ACCESS VIA FOUR FLIGHTS OF STAIRS**

HEATING: **NO**

FACILITIES: **W.C.**







INFO

HIRE RATES

Commercial rates: £500 day (9-6) / £100 hour.

We have a subsidised public and community events programme please get in touch for more information.

PARKING

There is metered street parking directly outside the Pipe Factory. Parking rate is 20p for twenty minutes. We also have a small courtyard area which has space to park one vehicle.

FACILITIES

The pipe factory has one w.c. and running water on the fourth floor of the building only.

There is no heating. There is no working lift. We do not provide any technical equipment or assistance. We do have wireless internet.

WALKING DISTANCES

Central Station - 20 min

Queen St. St - 20 min

High St. - 11 min

Argyle St. - 13 min

CONTACT

For hires/bookings:

Lizzie Hudson: 0141 246 0445

Email: hire@friendsofthepipefactory.co.uk

General enquiries:

info@friendsofthepipefactory.co.uk

WE ARE NOT A LICENCED VENUE THE VENUE IS NOT SUITABLE FOR PRIVATE PARTIES.

ACCESS AVAILABLE FROM 8AM-10PM.

LOCAL INFORMATION

The Pipe Factory is located within the Barras Market area. The Market operates on a Sat and Sun 12-4pm. During this time Moncur Street is closed to traffic and the surrounding roads can be quite busy.

FOOD AND DRINK

There are no catering facilities on site. There are plenty of local cafe's and restaurants who can accommodate large numbers. We encourage the support of local business.



Thank you we are very grateful to all those who have supported and continue to support our organisation. And the many voluntary hours given by so many individuals, including but not all:

BBCSCOTLAND
ITV
RCS
GSA
GLASGOW COLLEGE OF ART
NTS
GLASGOW CITY COUNCIL
GLASGOW CITY HERITAGE TRUST
CREATIVE SCOTLAND
BARRAS TRUST
BRITISH ARTS COUNCIL
CCA
GOETHE INSITUTE
HOSKINS ARCHITECTS
MARK KILKENNY ARCHITECTS
INCH ARCHITECTS
ON THE CORNER

Design by Fourtwentyseven 0427.co.uk

FACTORY

You can find us here:

42 Bain Street Glasgow
G20 4LA

info@friendsofthepipefactory.co.uk

THE PIPE